

CODE	DIMENSIONS (mm)					DIMENSIONS (in)					Q.ty / Pack
	OD Outside Diameter	Outside Diameter Tolerance	Ovality	t thickness	thickness tolerance	OD Outside Diameter	Outside Diameter Tolerance	Ovality	t thickness	thickness tolerance	
AIRTUAL016	16	±0.1	0.2	1.00	±0.1	0.629	±0.0039	0.008	0.039	±0.0039	
AIRTUAL020	20	+0.1 +0.3	0.3	1.30	+0.1 -0.2	0.787	+0.004 +0.012	0.008	0.051	+0.0039 -0.0078	10
AIRTUAL025	25	+0.1 +0.3	0.3	1.40	+0.1 -0.2	0.984	+0.004 +0.012	0.008	0.059	+0.0039 -0.0078	10
AIRTUAL032	32	+0.1 +0.3	0.3	1.50	+0.2 -0.1	1.259	+0.004 +0.012	0.008	0.059	+0.0078 -0.0039	5
AIRTUAL040	40	+0.1 +0.35	0.3	1.80	±0.2	1.574	+0.004 -0	0.008	0.070	±0.0078	5
AIRTUAL050	50	+0.1 +0.5	0.4	2.00	±0.2	1.574	+0.004 +0.012	0.012	0.078	±0.0078	4
AIRTUAL063	63	+0.1 +0.5	0.4	2.00	±0.2	2.480	+0.004 0.016	0.012	0.078	±0.0078	3
AIRTUAL080	80	+0.1 +0.5	0.5	2.40	±0.2	3.140	+0.004 0.016	0.012	0.078	±0.0078	3
AIRTUAL110	110	+0.1 +0.5	0.5	2.50	±0.2	4.330	+0.004 0.016	0.012	0.078	±0.0078	2

Max. Operating Pressure
13 Bar, From -10°C To +90°C

Inside Pressure Test
55 Bar For 1 Hour At +20°C

Material

Aluminium Extrusion Alloy EN AW T6 UNI-EN 755-2 With Inside And Outside Titanium-Based, Chrome-Free And Rohs-Complying Treating And Electrocoated Outside Surface

Colour

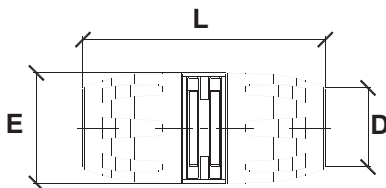
Blue RAL 5012 – Green Similar To RAL 6032

Manufacturing Process

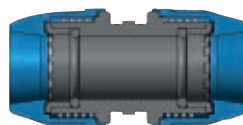
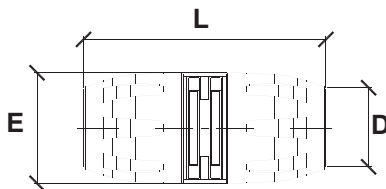
Seamless Extrusion Process

Quick Line Fittings diam 16 ÷ 63 mm

QLMAPA	Coupling				
Code	Gr	D	L	E	C
QLMAPA016	50	16	81	37	38
QLMAPA020	90	20	98	45	48
QLMAPA025	132	25	106	51	52
QLMAPA032	212	32	124	61	62
QLMAPA040	350	40	142	75	70
QLMAPA050	505	50	161	87	79
QLMAPA063	570	63	170	108	80,5



QLMASPA	Sliding Coupling				
Code	Gr	D	L	E	C
QLMASPA032	212	32	124	61	62
QLMASPA040	350	40	142	75	70
QLMASPA050	505	50	161	87	79
QLMASPA063	570	63	170	108	80,5

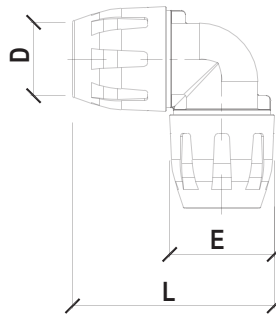


Legend

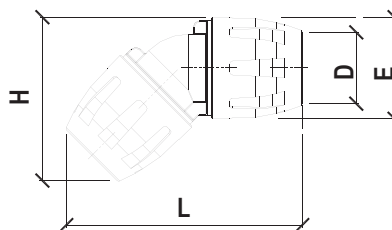
C	Socket depth
C1	Socket depth 1
D	Socket diameter
D1	Socket diameter 1
Dp	Hollow mill driving diameter
d	Thread diameter
d1	Thread diameter 1
d2	Thread diameter 2
E	Overall outside diameter ring nut
E1	Overall outside diameter ring nut 1
Gr	Weight in grams
H	Height
L	Length
L1	Length 1
L2	Length 2
La	Width
W	Wall central axe distance

Quick Line Fittings diam 16 ÷ 63 mm

QLGO90PA		90° Elbow				
Code	Gr	D	L	E	C	
QLGO90PA016	70	16	72	37	38	
QLGO90PA020	100	20	86	45	48	
QLGO90PA025	140	25	95	51	52	
QLGO90PA032	240	32	122	61	62	
QLGO90PA040	390	40	130	75	70	
QLGO90PA050	580	50	152	87	79	
QLGO90PA063	800	63	165	108	80,5	



QLGO45PA		45° Elbow				
Code	Gr	D	L	H	E	C
QLGO45PA020	100	20	104	72	45	48
QLGO45PA025	145	25	115	81	51	52
QLGO45PA032	235	32	137	97	61	62
QLGO45PA040	375	40	160	115	75	70
QLGO45PA050	540	50	185	134	87	79
QLGO45PA063	770	63	210	140	108	80,5



Legend

C	Socket depth
C1	Socket depth 1
D	Socket diameter
D1	Socket diameter 1
Dp	Hollow mill driving diameter
d	Thread diameter
d1	Thread diameter 1
d2	Thread diameter 2
E	Overall outside diameter ring nut
E1	Overall outside diameter ring nut 1
Gr	Weight in grams
H	Height
L	Length
L1	Length 1
L2	Length 2
La	Width
W	Wall central axe distance

AIRCOM srl

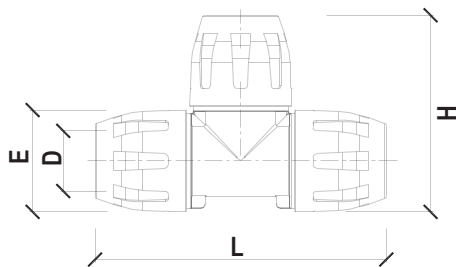
via Trattato di Maastricht • 15067 NOVI LIGURE (AL) - Italy

Ph + 39 0143 329502 • fax +39 0143 358175

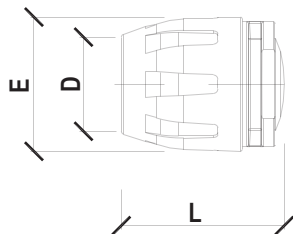
www.aircomsystem.com • info@aircomsystem.com

Quick Line Fittings diam 16 ÷ 63 mm

QLTEPA	90° Tee					
Code	Gr	D	L	E	H	C
QLTEPA016	90	16	109	37	73	38
QLTEPA020	160	20	127	45	86	48
QLTEPA025	210	25	140	51	95	52
QLTEPA032	360	32	170	61	122	62
QLTEPA040	565	40	185	75	130	70
QLTEPA050	850	50	216	87	152	79
QLTEPA063	1200	63	235	108	180	80,5



QLCAPA	End Cap				
Code	Gr	D	L	E	C
QLCAPA016	30	16	50	37	38
QLCAPA020	58	20	54	45	48
QLCAPA025	75	25	60	51	52
QLCAPA032	126	32	71	61	62
QLCAPA040	200	40	78	75	70
QLCAPA050	298	50	85	87	79
QLCAPA063	350	63	90	108	80,5



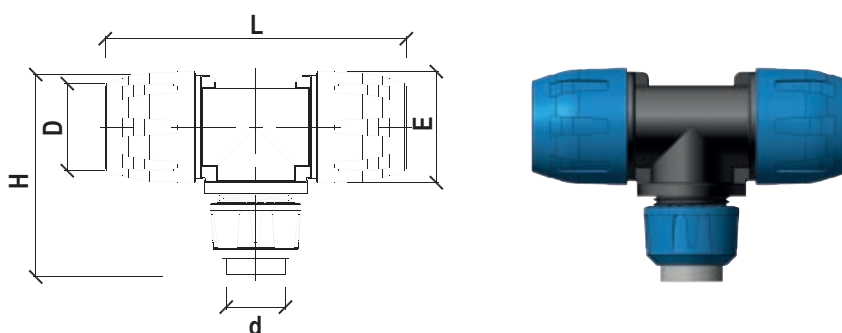
Legend

C	Socket depth
C1	Socket depth 1
D	Socket diameter
D1	Socket diameter 1
Dp	Hollow mill driving diameter
d	Thread diameter
d1	Thread diameter 1
d2	Thread diameter 2
E	Overall outside diameter ring nut
E1	Overall outside diameter ring nut 1
Gr	Weight in grams
H	Height
L	Length
L1	Length 1
L2	Length 2
La	Width
W	Wall central axe distance

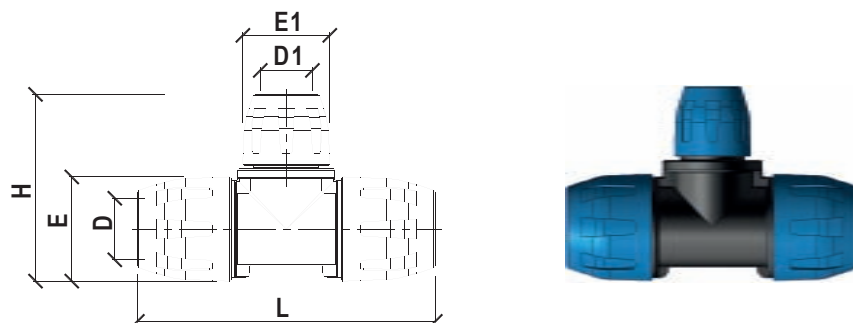
Quick Line Fittings diam 16 ÷ 63 mm

QLTPPA	90° threaded Tee						
Code**	Gr	D	d	L	E	H	C
QLTPPA020048	160	20	1/2"	127	45	75	48
QLTPPA025048	210	25	1/2"	140	51	80	52

**NPT thread available



QLTRPA	Reducing Tee								
Code	Gr	D	D1	L	E	E1	H	C	C1
QLTRPA020016	150	20	16	127	45	37	80	48	38
QLTRPA025016	200	25	16	140	51	45	88	52	38
QLTRPA025020	210	25	20	140	51	37	98	52	48
QLTRPA032020	340	32	20	170	61	45	111	62	48
QLTRPA032025	340	32	25	170	61	51	113	62	52
QLTRPA040025	510	40	25	185	75	51	128	70	52
QLTRPA040032	540	40	32	185	75	61	131	70	62
QLTRPA050032	760	50	32	216	87	61	147	79	62
QLTRPA050040	820	50	40	216	87	75	150	79	70
QLTRPA063040	820	63	40	235	108	75	160	80,5	70
QLTRPA063050	1120	63	50	235	108	87	168	80,5	79

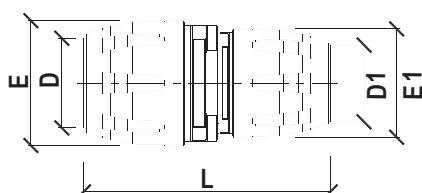


Legend

C	Socket depth
C1	Socket depth 1
D	Socket diameter
D1	Socket diameter 1
Dp	Hollow mill driving diameter
d	Thread diameter
d1	Thread diameter 1
d2	Thread diameter 2
E	Overall outside diameter ring nut
E1	Overall outside diameter ring nut 1
Gr	Weight in grams
H	Height
L	Length
L1	Length 1
L2	Length 2
La	Width
W	Wall central axe distance

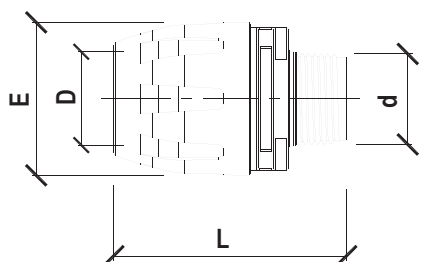
Quick Line Fittings diam 16 ÷ 63 mm

QLRIDPA	Reduction								
	Code	Gr	D	D1	L	E	E1	C	C1
QLRIDPA025020	120	25	20	101	51	45	52	48	
QLRIDPA032025	178	32	25	115	61	51	62	52	
QLRIDPA040025	230	40	25	125	75	61	70	52	
QLRIDPA040032	290	40	32	133	75	51	70	62	
QLRIDPA050040	450	50	40	151	87	75	79	70	



QLMNPA	Union, male threaded						
	Code**	Gr	D	d	L	E	C
QLMNPA016048	30	16	1/2"	64	37	38	
QLMNPA020048	60	20	1/2"	68	45	48	
QLMNPA020068	60	20	3/4"	68	45	48	
QLMNPA025048	80	25	1/2"	71	51	52	
QLMNPA025068	80	25	3/4"	73	51	52	
QLMNPA025088	80	25	1"	76	51	52	
QLMNPA032088	120	32	1"	85	61	62	
QLMNPA032108	130	32	1.1/4"	87	61	62	
QLMNPA040088	200	40	1"	96	75	70	
QLMNPA040108	200	40	1.1/4"	97	75	70	
QLMNPA040128	200	40	1.1/2"	98	75	70	
QLMNPA050128	300	50	1.1/2"	108	87	79	
QLMNPA050168	290	50	2"	111	87	79	
QLMNPA063168	350	63	2"	115	108	80,5	

**NPT thread available

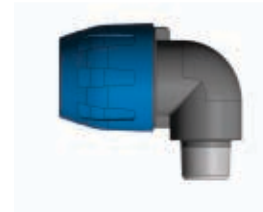
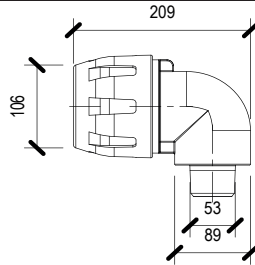


Legend

C	Socket depth
C1	Socket depth 1
D	Socket diameter
D1	Socket diameter 1
Dp	Hollow mill driving diameter
d	Thread diameter
d1	Thread diameter 1
d2	Thread diameter 2
E	Overall outside diameter ring nut
E1	Overall outside diameter ring nut 1
Gr	Weight in grams
H	Height
L	Length
L1	Length 1
L2	Length 2
La	Width
W	Wall central axe distance

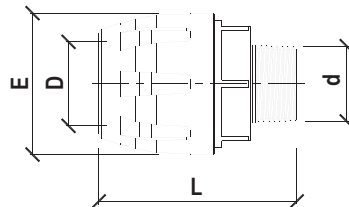
Quick Line Fittings diam 16 ÷ 63 mm

QLGO90PM		90° Elbow, male thread				
Code	Gr.	D	d	L	E	C
QLGO90PM020048	0,30	20	1/2"	200	45	48
QLGO90PM025048	0,60	25	1/2"	209	51	52
QLGO90PM025068	0,80	25	3/4"	209	51	52



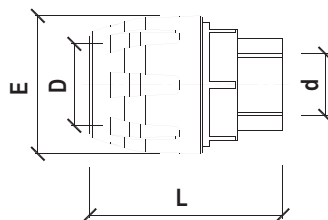
QLMNM		Nipple Socket - Aluminium body - male threaded				
Code**	Gr	D	d	L	E	C
QLMNM020048	100	20	1/2"	67	45	48
QLMNM020068	110	20	3/4"	67	45	48
QLMNM025088	130	25	1"	76	51	52
QLMNM032108	220	32	1.1/4"	87	61	62
QLMNM040128	420	40	1.1/2"	98	75	70
QLMNM050168	580	50	2"	111	87	79

**NPT thread available



QLMPM		Female Nipple Socket - Aluminium body - female threaded				
Code **	Gr	D	d	L	E	C
QLMPM020048	110	20	1/2"	67	45	48
QLMPM020068	110	20	3/4"	67	45	48
QLMPM025088	150	25	1"	76	51	52
QLMPM032108	230	32	1.1/4"	87	61	62
QLMPM040128	460	40	1.1/2"	98	75	70
QLMPM050168	590	50	2"	111	87	79

**NPT thread available



Legend

C	Socket depth
C1	Socket depth 1
D	Socket diameter
D1	Socket diameter 1
Dp	Hollow mill driving diameter
d	Thread diameter
d1	Thread diameter 1
d2	Thread diameter 2
E	Overall outside diameter ring nut
E1	Overall outside diameter ring nut 1
Gr	Weight in grams
H	Height
L	Length
L1	Length 1
L2	Length 2
La	Width
W	Wall central axe distance

AIRCOM srl

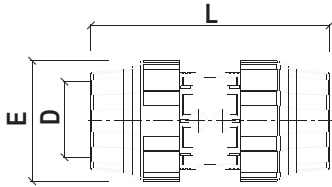
via Trattato di Maastricht • 15067 NOVI LIGURE (AL) - Italy

Ph + 39 0143 329502 • fax +39 0143 358175

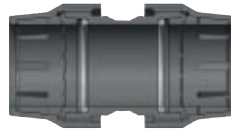
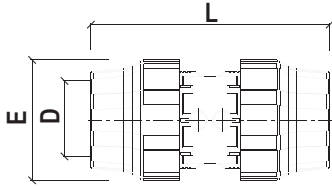
www.aircomsystem.com • info@aircomsystem.com

Quick Line Fittings diam 40 ÷ 80 mm

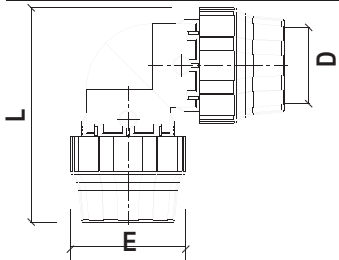
QLMAAL	Coupling				
Code	Gr.	D	L	E	C
QLMAAL040	250	40	156	62	77
QLMAAL063	890	63	193	97	95
QLMAAL080	1,490	80	232	116	114



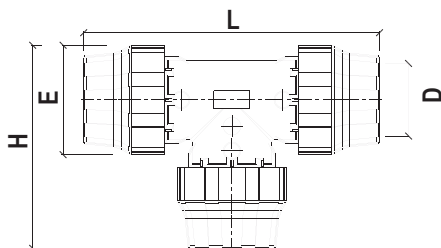
QLMASAL	Sliding Coupling				
Code	Gr.	D	L	E	C
QLMASAL040	250	40	156	62	77
QLMASAL063	890	63	193	97	95
QLMASAL080	1,490	80	232	116	114



QLGO90AL	90° Elbow				
Code	Gr.	D	L	E	C
QLGO90AL040	300	40	130	62	77
QLGO90AL063	1,050	63	180	97	95
QLGO90AL080	1,800	80	217	116	114



QLTEAL	90° Tee					
Code	Gr.	D	L	E	H	C
QLTEAL040	420	40	132	62	132	77
QLTEAL063	1,280	63	263	97	181	95
QLTEAL080	2,580	80	318	116	217	114

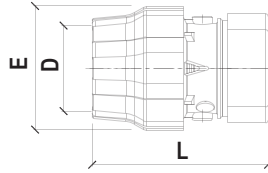


Legend

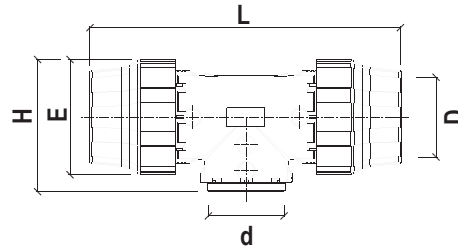
C	Socket depth
C1	Socket depth 1
D	Socket diameter
D1	Socket diameter 1
Dp	Hollow mill driving diameter
d	Thread diameter
d1	Thread diameter 1
d2	Thread diameter 2
E	Overall outside diameter ring nut
E1	Overall outside diameter ring nut 1
Gr	Weight in grams
H	Height
L	Length
L1	Length 1
L2	Length 2
La	Width
W	Wall central axe distance

Quick Line Fittings diam 40 ÷ 80 mm

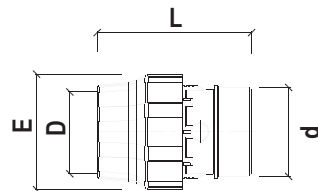
QLCAAL		End Cap				
Code	Gr.	D	L	E	C	
QLCAAL040	450	40	94	62	77	
QLCAAL063	1,230	63	139	97	95	
QLCAAL080	1,560	80	163	116	114	



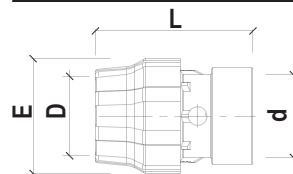
QLTPAL		Threaded Tee, female thread					
Code	Gr.	D	d	L	E	H	C
QLTPAL040108	450	40	1.1/4"	132	62	70	77
QLTPAL063168	1,180	63	2"	263	97	112	95
QLTPAL080208	1,850	80	2.1/2"	318	116	136	114



QLMNMAL		Nipple Socket - Aluminum body - male threaded				
Code	Gr.	D	d	L	E	C
QLMNMAL040128	160	40	1.1/2"	94	62	77
QLMNMAL063168	508	63	2"	130	77	95
QLMNMAL063208	520	63	2.1/2"	130	97	95
QLMNMAL080208	850	80	2.1/2"	152	116	114
QLMNMAL080248	870	80	3"	155	116	114



QLMPMAL		Nipple Socket - Aluminum body - female threaded				
Code	Gr.	D	d	L	E	C
QLMPMAL040128	175	1.1/2"	1.1/2"	94	62	77
QLMPMAL063208	560	2.1/2"	2.1/2"	134	97	95

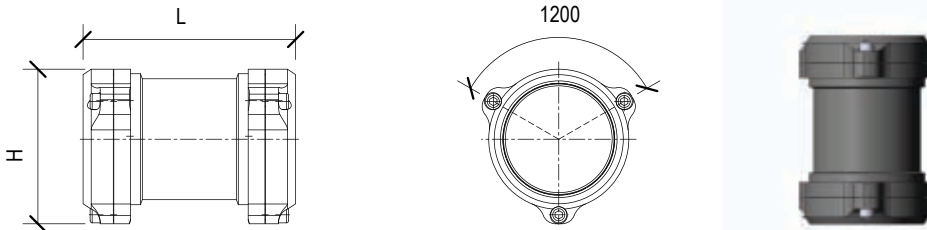


Legend

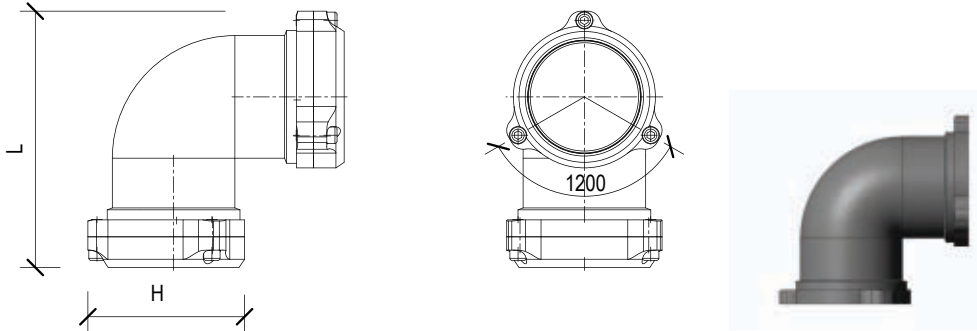
C	Socket depth
C1	Socket depth 1
D	Socket diameter
D1	Socket diameter 1
Dp	Hollow mill driving diameter
d	Thread diameter
d1	Thread diameter 1
d2	Thread diameter 2
E	Overall outside diameter ring nut
E1	Overall outside diameter ring nut 1
Gr	Weight in grams
H	Height
L	Length
L1	Length 1
L2	Length 2
La	Width
W	Wall central axe distance

Quick Line Fittings diam 110 mm

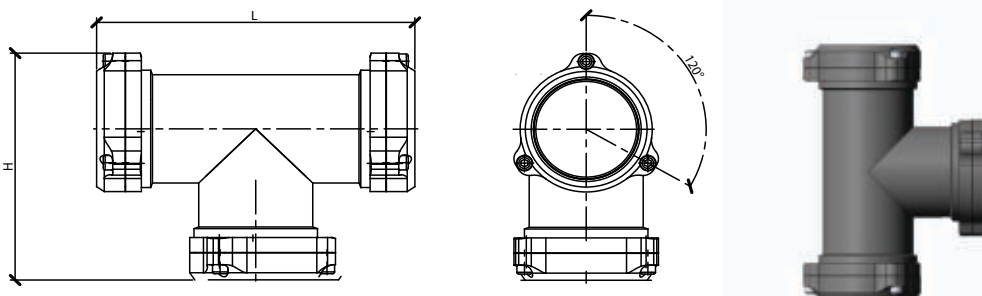
QLMAAL	Coupling diam 110 mm				
Code	Gr.	D	L	H	C
QLMAAL110	2,500	110	211	153	102



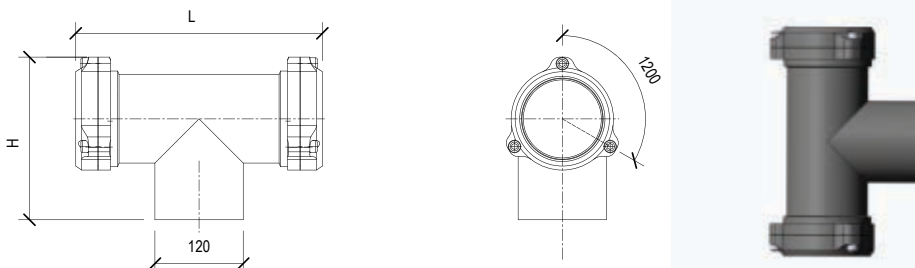
QLGO90AL	90° Elbow diam 110 mm				
Code	Gr.	D	L	H	C
QLGO90AL110	3,000	110	251	162	102



QLTEAL	90° Tee diam 110 mm				
Code	Gr.	D	L	H	C
QLTEAL110	4,200	110	335	227	102



QLTPAL	90° threaded Tee diam 110 mm				
Code	Gr.	D	L	H	C
QLTPAL110248	3,500	110	335	221	102

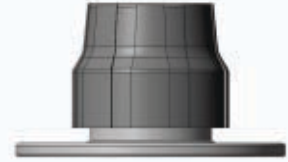
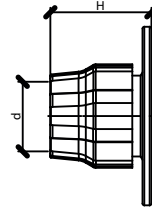
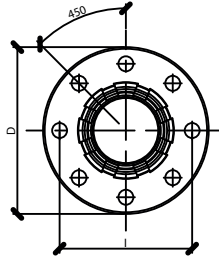


Legend

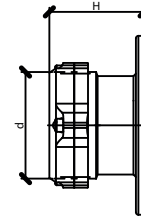
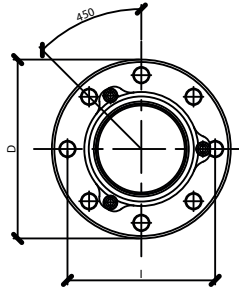
C	Socket depth
C1	Socket depth 1
D	Socket diameter
D1	Socket diameter 1
Dp	Hollow mill driving diameter
d	Thread diameter
d1	Thread diameter 1
d2	Thread diameter 2
E	Overall outside diameter ring nut
E1	Overall outside diameter ring nut 1
Gr	Weight in grams
H	Height
L	Length
L1	Length 1
L2	Length 2
La	Width
W	Wall central axe distance

Quick Line Fittings diam 63 ÷ 110 mm

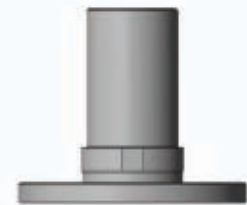
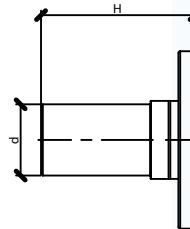
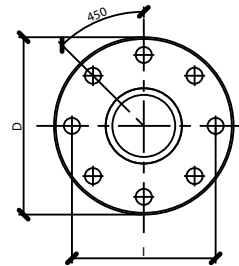
QLMFLAL		Flanged Coupling					
Code	Gr.	D	d	L	E	H	C
QLMFLAL063168	1,200	63	2"	227	97	109	95
QLMFLAL080248	2,000	80	3"	227	116	115	114



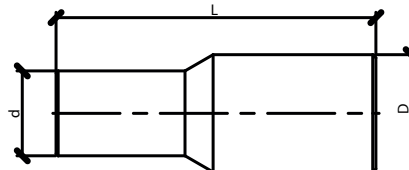
QLMFLAL		Flanged Coupling					
Code	Gr.	D	d	L	E	H	C
QLMFLAL110328	2,100	110	106	227	154	117	102



QLTFLAL		Flanged Tip					
Code	Gr.	D	d	L	E	H	C
QLTFLAL80208	1,300	80	3"	227	80	172	120
QLTFLAL110248	1,700	110	4"	227	110	180	120



QLRIDTU		Reduction pipe, male/male connection				
Code	Gr.	D	d	L	E	C
QLRIDTU11063	1,000	110	63	302	63	120
QLRIDTU11080	1,200	110	80	302	80	120



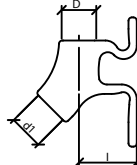
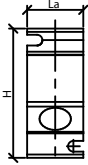
Legend

C	Socket depth
C1	Socket depth 1
D	Socket diameter
D1	Socket diameter 1
Dp	Hollow mill driving diameter
d	Thread diameter
d1	Thread diameter 1
d2	Thread diameter 2
E	Overall outside diameter ring nut
E1	Overall outside diameter ring nut 1
Gr	Weight in grams
H	Heigh
L	Length
L1	Length 1
L2	Length 2
La	Width
W	Wall central axe distance

Wall Mount Manifolds Aluminum

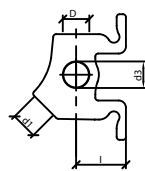
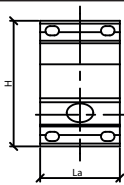
DIRAPMAL Single port manifold, female threads

Code	Gr.	D	d1	d2	d3	H	L
DIRAPMAL048048	120	1/2"	1/2"	-	-	78	34



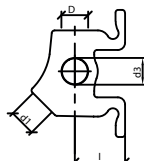
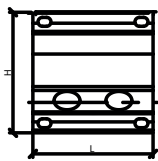
DIRAPFRLAL Three port manifold, female threads + drain 1/4" blind

Code	Gr.	D	d1	d2	d3	H	L
DIRAPFRLAL048048	340	1/2"	1/2"	1/2"	1/2"	88	55



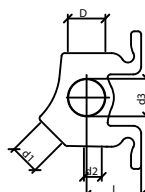
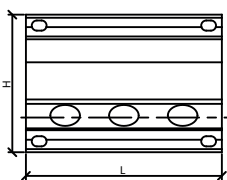
DIRAPLAL Four port manifold, female threads + drain 1/4" blind

Code	Gr.	D	d1	d2	d3	H	L
DIRAPLAL048048	510	1/2"	1/2"	1/2"	1/2"	88	88
DIRAPLAL068068	470	3/4"	1/2"	1/2"	3/4"	88	88



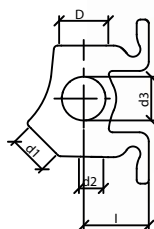
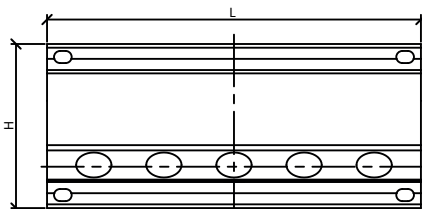
DIRPMUAL120 Five port manifold, female threads + drain 1/4" blind

Code	Gr.	D	d1	d2	d3	H	L
DIRPMUAL120	840	3/4"	1/2"	1/2"	3/4"	88	125



DIRPMUAL200 Seven port manifold, female threads + drain 1/4" blind

Code	Gr.	D	d1	d2	d3	H	L
DIRPMUAL200	1,300	3/4"	1/2"	1/2"	3/4"	88	200



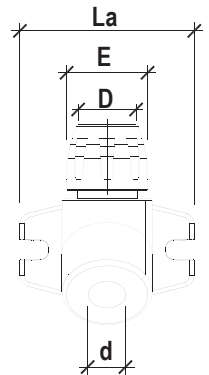
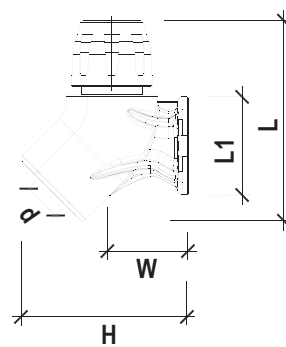
Legend

C	Socket depth
C1	Socket depth 1
D	Socket diameter
D1	Socket diameter 1
Dp	Hollow mill driving diameter
d	Thread diameter
d1	Thread diameter 1
d2	Thread diameter 2
E	Overall outside diameter ring nut
E1	Overall outside diameter ring nut 1
Gr	Weight in grams
H	Height
L	Length
L1	Length 1
L2	Length 2
La	Width
W	Wall central axe distance

Quick Line Accessories

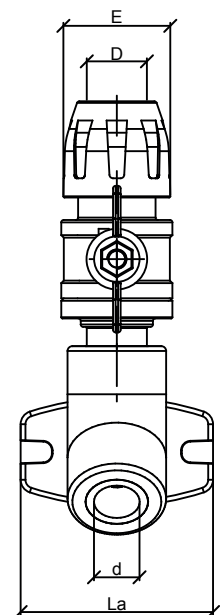
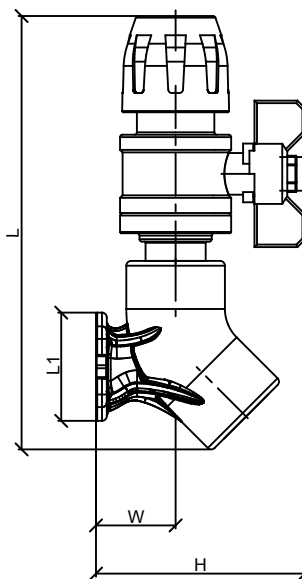
QLAPM	Single port manifold, female thread									
Code**	Gr	D	d	L	L1	La	H	E	W	C
QLAPM016	120	16	1/2"	94	45	80	41	37	35	38
QLAPM020	190	20	1/2"	96	45	80	41	45	35	48

**NPT thread available



QLAPMVA	Single port manifold with Quick Line male threaded ball valve										
Code**	Gr	D	d	L	L1	L2	La	H	E	W	C
QLAPMVA016	420	16	1/2"	170	45	-	80	41	37	35	38
QLAPMVA020	560	20	1/2"	170	45	-	80	41	45	35	48

**NPT thread available



QUICK LINE SYSTEM TECHNICAL SCHEDULE

Legend

C	Socket depth
C1	Socket depth 1
D	Socket diameter
D1	Socket diameter 1
Dp	Hollow mill driving diameter
d	Thread diameter
d1	Thread diameter 1
d2	Thread diameter 2
E	Overall outside diameter ring nut
E1	Overall outside diameter ring nut 1
Gr	Weight in grams
H	Heigh
L	Length
L1	Length 1
L2	Length 2
La	Width
W	Wall central axe distance

AIRCOM srl

via Trattato di Maastricht • 15067 NOVI LIGURE (AL) - Italy

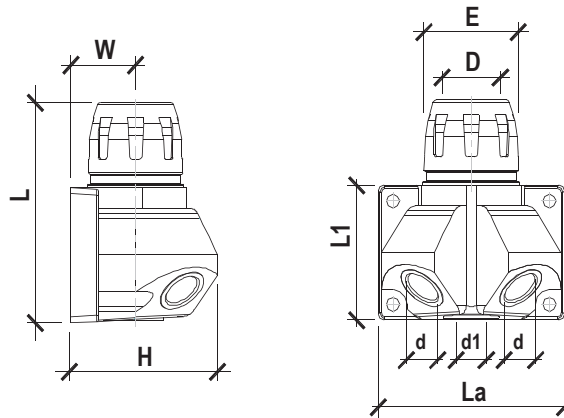
Ph + 39 0143 329502 • fax +39 0143 358175

www.aircomsystem.com • info@aircomsystem.com

Quick Line Accessories

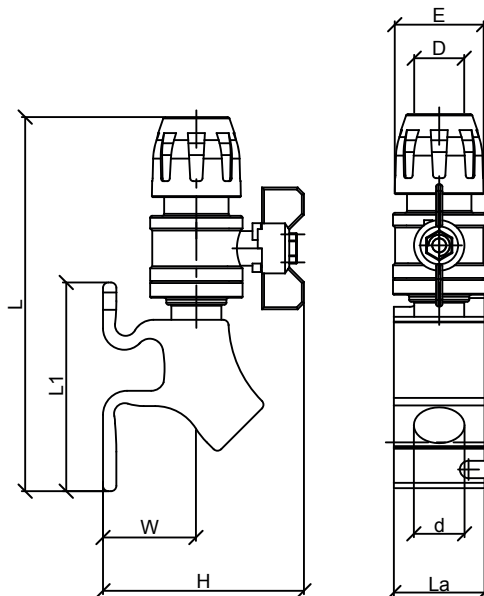
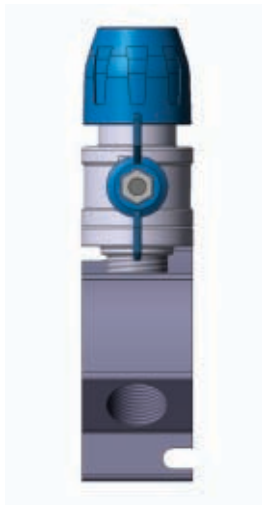
QLAPL	Double port manifold, female thread											
Code**	Gr	D	d	d1	L	L1	La	H	E	W	C	
QLAPL016	270	16	1/2"	1/4"	100	68	99	78	37	35	38	
QLAPL020	320	20	1/2"	1/4"	110	68	99	78	45	35	48	
QLAPL025	330	25	1/2"	1/4"	110	68	99	78	51	35	52	

**NPT thread available



QLAPMALVA	Single port manifold, female threads with Quick Line male threaded ball valve											
Code**	Gr	D	d	d1	L	L1	L2	La	H	E	W	C
QLAPLVA016	340	16	1/2"	-	164	78	-	34	164	37	43	38
QLAPLVA020	480	20	1/2"	-	164	78	-	34	164	45	43	48

**NPT thread available



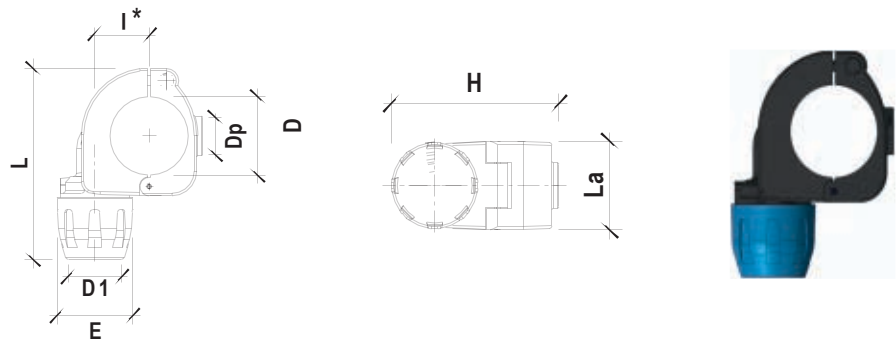
Legend

C	Socket depth
C1	Socket depth 1
D	Socket diameter
D1	Socket diameter 1
Dp	Hollow mill driving diameter
d	Thread diameter
d1	Thread diameter 1
d2	Thread diameter 2
E	Overall outside diameter ring nut
E1	Overall outside diameter ring nut 1
Gr	Weight in grams
H	Height
L	Length
L1	Length 1
L2	Length 2
La	Width
W	Wall central axe distance

Quick Line Accessories

QLDERPA	Quick branch plug						
Code	Gr	D	D1	L	E	La	Dp
QLDERPA025016	210	25	16	113	37	52	16
QLDERPA025020	230	25	20	113	45	52	16
QLDERPA032016	200	32	16	113	37	52	16
QLDERPA032020	220	32	20	113	45	52	16
QLDERPA040016	250	40	16	125	37	52	20
QLDERPA040020	270	40	20	125	45	52	20
QLDERPA040025	280	40	25	125	51	52	20
QLDERPA050016	420	50	16	145	37	60	20
QLDERPA050020	420	50	20	145	45	60	20
QLDERPA050025	430	50	25	145	51	60	20
QLDERPA063020	400	63	20	145	45	60	20
QLDERPA063025	410	63	25	145	51	60	20
QLDERPA063032	420	63	32	148	61	60	20
QLDERPA080020	1110	80	20	220	45	63	22,5
QLDERPA080025	1120	80	25	220	51	63	22,5
QLDERPA080032	1130	80	32	220	61	63	22,5
QLDERPA110025	1240	110	25	220	51	63	22,5
QLDERPA110032	1350	110	32	220	61	63	22,5

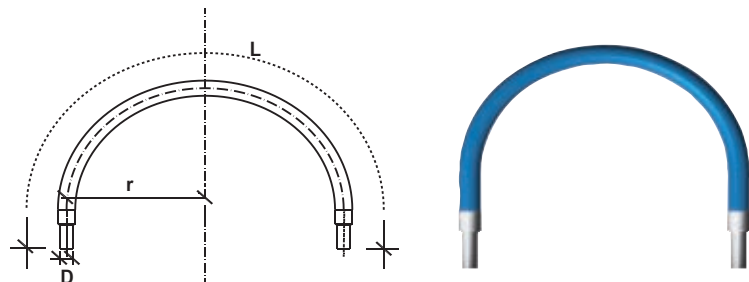
I*: Interaxis (see DIRDERFF in Aircom System Accessories - Technical Schedules)



Legend

C	Socket depth
C1	Socket depth 1
D	Socket diameter
D1	Socket diameter 1
Dp	Hollow mill driving diameter
d	Thread diameter
d1	Thread diameter 1
d2	Thread diameter 2
E	Overall outside diameter ring nut
E1	Overall outside diameter ring nut 1
Gr	Weight in grams
H	Height
L	Length
L1	Length 1
L2	Length 2
La	Width
W	Wall central axe distance

QLFLEX	Compensator hose, male connection				
Code	Gr	D	< r >		L
QLFLEX020	420	20	15	20	800
QLFLEX025	760	25	18	25	820
QLFLEX032	1430	32	23	32	960
QLFLEX040	1900	40	29	38	1200
QLFLEX050	3500	50	36	47	1430
QLFLEX063	5000	63	45	59	1650



AIRCOM srl

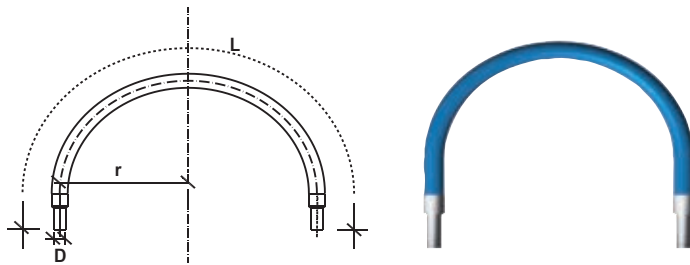
via Trattato di Maastricht • 15067 NOVI LIGURE (AL) - Italy

Ph + 39 0143 329502 • fax +39 0143 358175

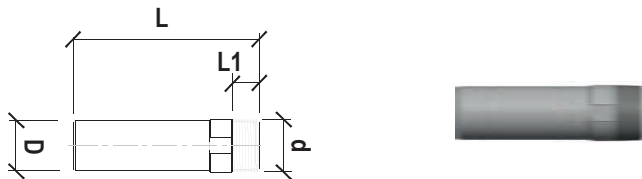
www.aircomsystem.com • info@aircomsystem.com

Quick Line Accessories

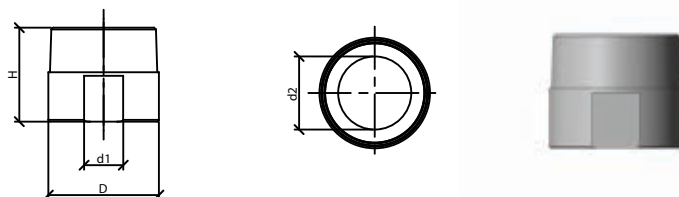
QLFLEXM Flexible expansion hose with male threaded ends					
Code	Gr.	D	< r >		L
QLFLEXM088	1,430	1" x 1"	18	25	820
QLFLEXM108	1,900	1.1/4" x 1.1/4"	23	32	1200
QLFLEXM128	3,500	1.1/2" x 1.1/2"	29	38	1430
QLFLEXM168	5,000	2" x 2"	45	59	1650



QLPUNM Male threaded Quick Line Spigot (aluminium)					
Code	Gr.	D	d	L (in)	L1 (in)
QLPUNM020048	0,035	20	1/2"	95	13
QLPUNM020068	0,045	20	3/4"	96	13
QLPUNM025088	0,076	25	1"	108	16
QLPUNM032108	0,137	32	1.1/4"	119	18
QLPUNM040128	0,182	40	1.1/2"	135	21
QLPUNM050168	0,241	50	2"	141	23
QLPUNM063168	0,300	63	2"	157	23
QLPUNM080248	0,734	80	3"	171	26



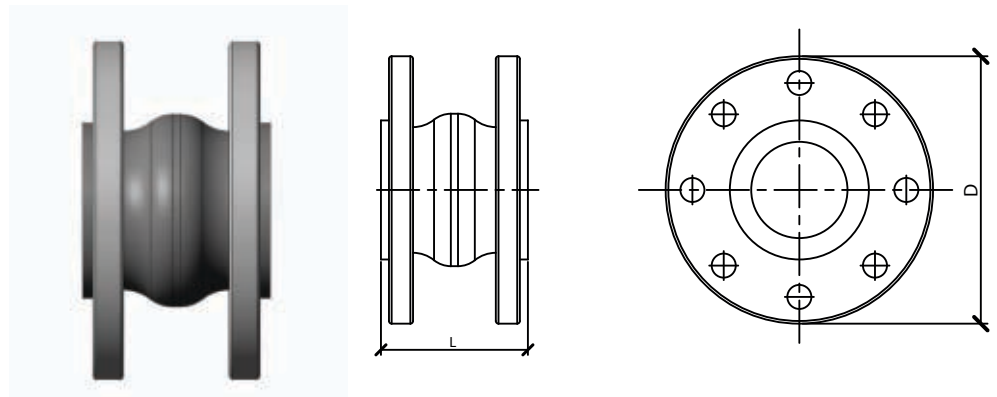
QLRIDMF Concentric male-female reduction (aluminium)					
Code	Gr.	D	d	L (in)	L1 (in)
QLRIDMF108088	0,018	1.1/4"	1"	39	17
QLRIDMF128108	0,022	1.1/2"	1.1/4"	42	18
QLRIDMF168128	0,038	2"	1.1/2"	52	23
QLRIDMF208168	0,066	2.1/2"	2"	52	23
QLRIDMF248208	0,090	3"	2.1/2"	56	27



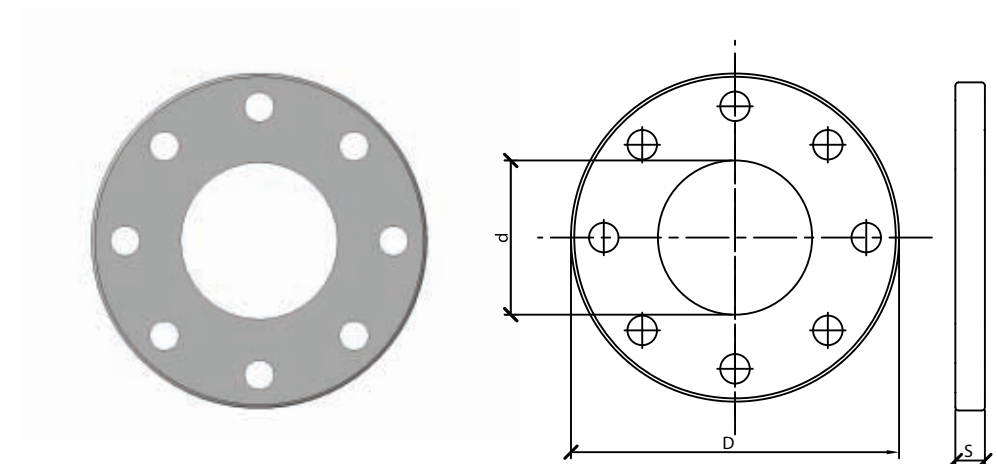
Legend

C	Socket depth
C1	Socket depth 1
D	Socket diameter
D1	Socket diameter 1
Dp	Hollow mill driving diameter
d	Thread diameter
d1	Thread diameter 1
d2	Thread diameter 2
E	Overall outside diameter ring nut
E1	Overall outside diameter ring nut 1
Gr	Weight in grams
H	Height
L	Length
L1	Length 1
L2	Length 2
La	Width
W	Wall central axe distance

DIRDIL		Expansion joint, flanged	
Code	Gr.	D	
DIRDIL063DIN	6,500	63	
DIRDIL080DIN	9,000	80	
DIRDIL110DIN	12,000	110	



DIRFLFF		Threaded flange	
Code	Gr.	D	
DIRFLFF168DIN	0,745	63	
DIRFLFF248DIN	1,100	80	
DIRFLFF328DIN	1,200	110	



Legend

C	Socket depth
C1	Socket depth 1
D	Socket diameter
D1	Socket diameter 1
Dp	Hollow mill driving diameter
d	Thread diameter
d1	Thread diameter 1
d2	Thread diameter 2
E	Overall outside diameter ring nut
E1	Overall outside diameter ring nut 1
Gr	Weight in grams
H	Heigh
L	Length
L1	Length 1
L2	Length 2
La	Width
W	Wall central axe distance

AIRCOM srl

via Trattato di Maastricht • 15067 NOVI LIGURE (AL) - Italy
 Ph + 39 0143 329502 • fax +39 0143 358175
 www.aircomsystem.com • info@aircomsystem.com

DIRSM		Deburrers and Reamers		
Code	Gr.	D	H	
DIRSM008032	0,187	8-32	60	
DIRSM016050	0,420	16-50	85	
DIRSM063110	0,617	63-110		



DIRSMTR		Deburrers and Reamers with connection for drill		
Code	Gr.	D	H	
DIRSMTR016050	0,450	16-50	94	

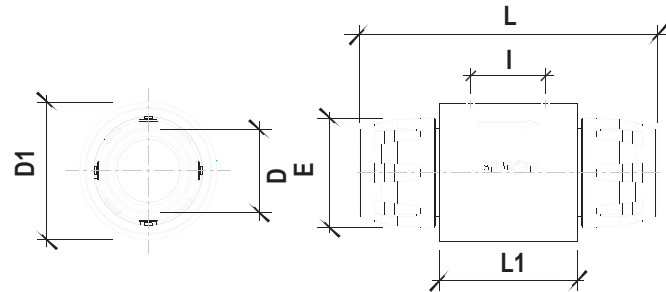


Legend

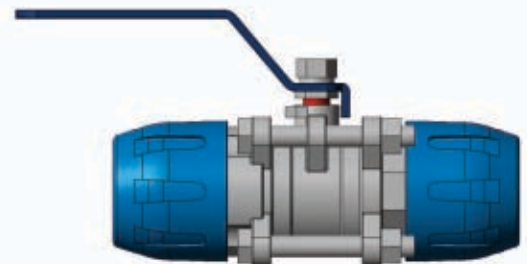
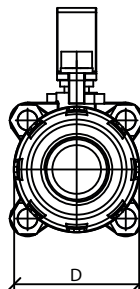
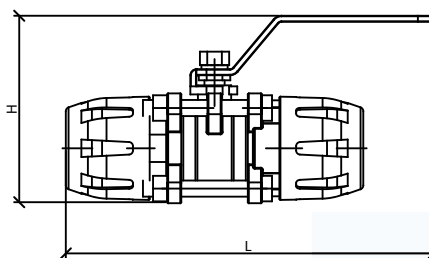
C	Socket depth
C1	Socket depth 1
D	Socket diameter
D1	Socket diameter 1
Dp	Hollow mill driving diameter
d	Thread diameter
d1	Thread diameter 1
d2	Thread diameter 2
E	Overall outside diameter ring nut
E1	Overall outside diameter ring nut 1
Gr	Weight in grams
H	Height
L	Length
L1	Length 1
L2	Length 2
La	Width
W	Wall central axe distance



QLVAVIP	Pneumatic single action Valve						
Code	Gr.	D	D1	L	L1	E	C
QLVAVIP032	1,250	32	89	200	92	62	35
QLVAVIP040	1,420	40	89	210	92	75	36
QLVAVIP050	2,120	50	109	245	110	87	70
QLVAVIP063	2,300	63	140	290	140	97	95



QLVAINOX	Quick Line steel ball valve, male threaded						
Code	Gr.	D	D1	L	L1	E	C
QLVAINOX040	2,000	40	-	269	-	62	77
QLVAINOX063	4,000	63	-	376	-	97	95
QLVAINOX080	9,500	80	-	483	-	116	114



Legend

C	Socket depth
C1	Socket depth 1
D	Socket diameter
D1	Socket diameter 1
Dp	Hollow mill driving diameter
d	Thread diameter
d1	Thread diameter 1
d2	Thread diameter 2
E	Overall outside diameter ring nut
E1	Overall outside diameter ring nut 1
Gr	Weight in grams
H	Heigh
L	Length
L1	Length 1
L2	Length 2
La	Width
W	Wall central axe distance

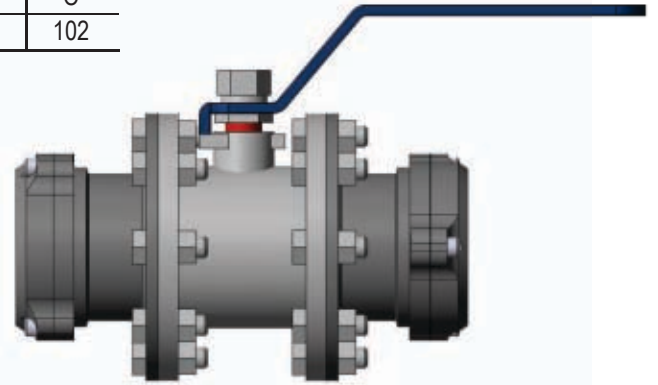
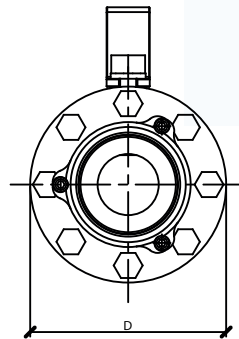
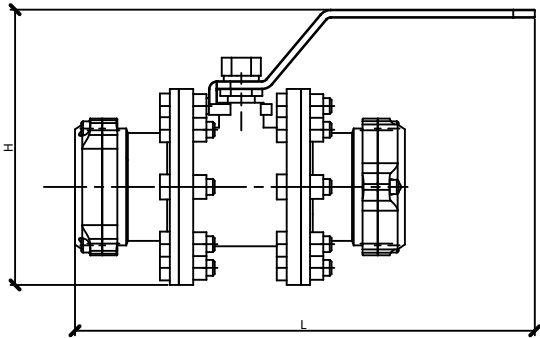
AIRCOM srl

via Trattato di Maastricht • 15067 NOVI LIGURE (AL) - Italy

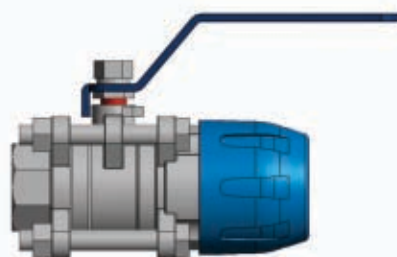
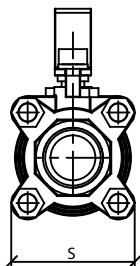
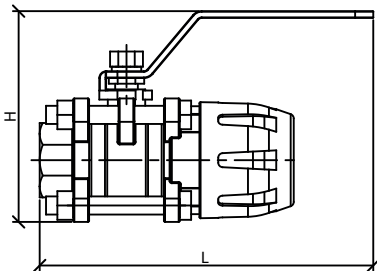
Ph + 39 0143 329502 • fax +39 0143 358175

www.aircomsystem.com • info@aircomsystem.com

QLVAINOX		Quick Line steel ball valve, male threaded					
Code	Gr.	D	D1	L	L1	E	C
QLVAINOX110	12,000	110	-	694	-	154	102



QLVAINOXF		Quick Line steel ball valve, female threaded					
Code	Gr.	D	D1	L	L1	E	C
QLVAINOXF040	1,800	40	-	225	-	67	77
QLVAINOXF063	3,500	63	-	309	-	97	95
QLVAINOXF080	8,000	80	-	393	-	116	114

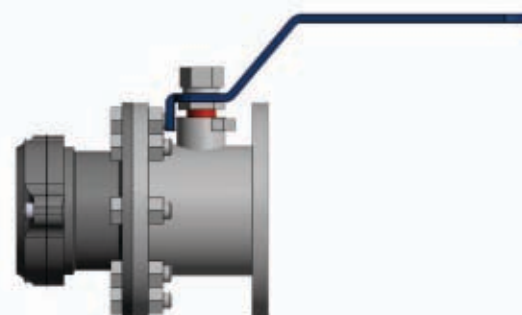
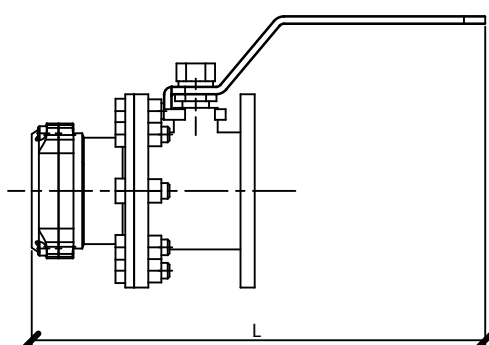
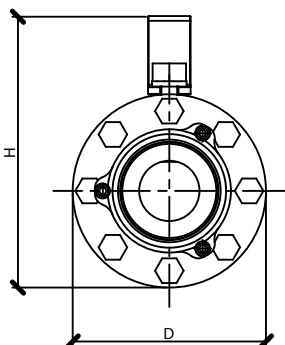


Legend

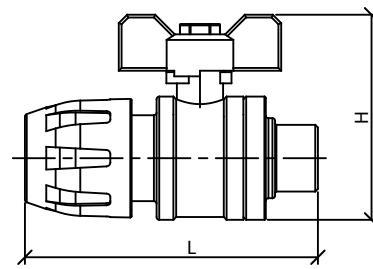
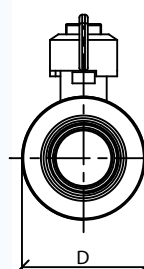
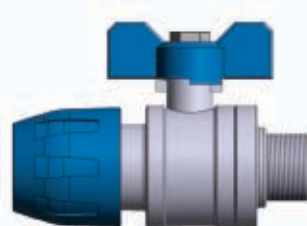
C	Socket depth
C1	Socket depth 1
D	Socket diameter
D1	Socket diameter 1
Dp	Hollow mill driving diameter
d	Thread diameter
d1	Thread diameter 1
d2	Thread diameter 2
E	Overall outside diameter ring nut
E1	Overall outside diameter ring nut 1
Gr	Weight in grams
H	Height
L	Length
L1	Length 1
L2	Length 2
La	Width
W	Wall central axe distance



QLVAINOXF		Quick Line steel ball valve, female threaded					
Code	Gr.	D	D1	L	L1	E	C
QLVAINOXF110	11,000	110	-	553	-	154	102



QLVAM		Quick Line male threaded connection ball valve						
Code	Gr.	D	d	L	L1	H	E	C
QLVAM016048	0,220	16	1/2"	103	-	60	37	38
QLVAM020048	0,360	20	1/2"	104	-	60	45	48
QLVAM025068	0,360	25	3/4"	106	-	60	51	52


Legend

C	Socket depth
C1	Socket depth 1
D	Socket diameter
D1	Socket diameter 1
Dp	Hollow mill driving diameter
d	Thread diameter
d1	Thread diameter 1
d2	Thread diameter 2
E	Overall outside diameter ring nut
E1	Overall outside diameter ring nut 1
Gr	Weight in grams
H	Height
L	Length
L1	Length 1
L2	Length 2
La	Width
W	Wall central axe distance

QLVAF		Quick Line female threaded connection ball valve						
Code	Gr.	D	d	L	L1	H	E	C
QLVAF016048	0,220	16	1/2"	103	-	60	37	38
QLVAF020048	0,360	20	1/2"	104	-	60	45	48
QLVAF025068	0,360	25	3/4"	106	-	60	51	52

